

Town Centre in a Park

Choa Chu Kang Town Centre will be rejuvenated with a new integrated transport hub, mixed-use developments and refreshed facilities, set within lush landscaping. Plans will commence after the Jurong Region Line (JRL) Choa Chu Kang station is completed.



市鎮中心重新完成，居民能享有位於翠綠環境中的設施。這包括一個多用途康樂區、小販中心以及其它住宅和社區設施。市鎮的通行將得到改善，公共空間也會更具綠意活力。

Selaras rejuvenasi, para penduduk boleh menikmati sebuah 'Pusat Bandar' di dalam Taman' dengan kemudahan baru termasuk hal pengangkutan, pusat penjaja, kemudahan komersial dan komuniti. Juga akan terdapat sambungan yang lebih baik dan ruang awam yang lebih menarik, yang terletak dalam persekitaran hijau dengan landskap yang subur.

பெருநகரத்தை, வாழ்வதற்கான ஒரு திட்டமிடப்பட்ட நகரத்தை போல, அமைக்கப் போகும், வசதி நிறைந்த வசதிகள் உள்ளிட்ட, புதிய வசதிகள், கூடலும் முன்பு காணப்படாத வசதிகளும் உள்ளிட்ட, இடங்களில் புதிய கூடுதல்களும் சாது சூட்சுமம், அமைதியான சூழல் உள்ள நகரத்தை அமைக்கப்படுகிறது.

3 Key Strategies



Injecting Urban Greenery

Diverse green spaces will be introduced in the town centre, such as enhanced landscaping and indoor greenery. Residents will also have access to improved community and landscaped spaces in Choa Chu Kang Park, including a new nature play garden.

1 Upgrading of Choa Chu Kang Park



The existing multi-purpose lawn will be rejuvenated with enhanced landscaping.



Landscaping Along Streets



Bringing Greenery Indoors



New nature play garden for experiential learning and multi-sensory experiences amidst a natural environment.



Introducing Rooftop Greenery



Introducing New Developments & Vibrant Spaces

New mixed-use developments including a new hawker centre, commercial and community facilities will be introduced for more retail and dining options. Vibrant public spaces such as a town plaza will provide opportunities for social activities and community bonding.

2 Developments & Spaces Set Amidst Greenery



Town plaza for variety of community activities.



Pedestrian mall with retail and dining options, lined with greenery.



New hawker centre providing affordable food options.



Enhancing Connectivity

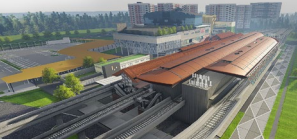
Residents can enjoy even better connectivity, with improved pedestrian connections across developments and the introduction of an integrated transport hub. Jurong Region Line (JRL) Choa Chu Kang station will be completed in 2027. The town centre rejuvenation plans will commence after the completion of the JRL Choa Chu Kang station.

3 Improved Accessibility between Developments



Choa Chu Kang North Park Connector will be widened to improve connectivity across Kranji Expressway.

4 Jurong Region Line (JRL)



When fully completed in 2029, JRL will connect residents to key places in the West. JRL Choa Chu Kang station (right).

Would like to see a Town Plaza...with seating and a small foyer for events and exhibitions...

Safer and more comfortable connections



Share your feedback with us using the QR code!

